

APLAPD

MOUNTED SPRAYER



carrarospray®

APL

MOUNTED SPRAYERS FOR THE APPLICATION OF PESTICIDES FOR PLANT PROTECTION AND CROP

- Frame in galvanized steel
- Reinforced fiberglass tank with graduate scale
- Gearbox 1 or 2 speeds and neutral in the standard model
- Fan with adjustable blades \varnothing 600, 700 and 800 mm
- Single or double nozzles in brass with membrane drip
- Nozzle holders tubes of stainless steel
- Suction filter with shut-off valve
- Hydraulic agitator
- Top wings to adjust air
- Directional wings to distribute the air
- Leaf grate to avoid dusts and leaves from the ground



APL 300



APL 150-200



APL

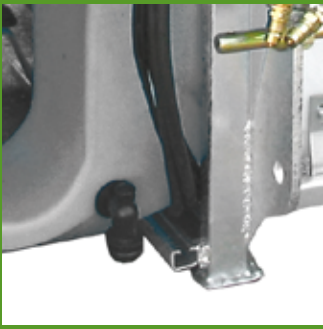
APD

SPRAYERS FOR APPLICATION OF PESTICIDES FOR PLANT PROTECTION
AND CROP USING THE PRINCIPLE OF THE INVERTED FAN

- Frame in galvanized steel
- Polyethylene tank with graduate scale
- Gearbox two speeds and neutral inverter
- Fan with 8 adjustable blades (rear position)
- Fan 4 adjustable blades and clutch (front position)
- Nozzle holders tubes of stainless steel
- Single double nozzles in brass with membrane drip
- Rear bumper with rounded tube
- Wings upper air guidance
- Suction filter with shut-off valve
- Hydraulic agitator



APD



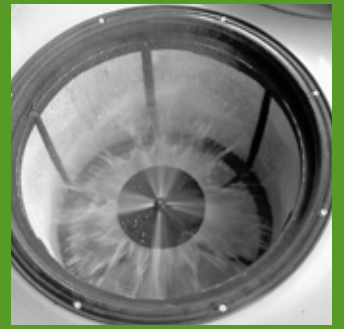
Outlet system with valve Ecology



Fresh water tank for cleaning of chemical residues



Batch filters before the nozzles



Automatic mixer on tank basket for powdered product



Special brackets for transporting with a lift truck



Jet for clean-washer inside the tank



Clean water tank for hand washing



Suction filter with shut-off valve and cock of the quick washing circuit for chemical residues



12 Volts electric remote control mod. ARAG



12 Volts electric remote control mod. ARAG with electric regulation and pressure-gauge in the tractor's cab



Gerabox 2 speeds and neutral



Sprayguns



Monitor speed Km/h, delivery l/min - l.tot, time (h)



Spraying calibrated computer Spraycontrol DPA



12 Volts electric remote control



SAFETY

- Fill anti polluting tank
- Automatic mixer for powdered products
- Security valves
- Shielding for mechanical parts
- Calibrated Distribution by computer DPA
- Washing circuit for chemical residues
- Rear Lights
- Total lack of suction of dust, soil and leaves as a result of the principle of the inverted fan (APD model)
- DPA Computer
- Uniform air distribution on the right and left due to the two counter-rotating fans

| | FAN | RANGE | PUMP | DIMENSIONS | NOZZLES | POWER |
|-----------------|-----|--------|-------|----------------|---------|-------|
| | mm | mc/h | l/min | mm LxLxh | n° | Hp |
| APL 150 | 600 | 32.500 | 50÷80 | 820x1000x1020 | 8 | 18 |
| APL 200 | 600 | 32.500 | 50÷80 | 990x1060x1020 | 8 | 22 |
| APL 300 | 600 | 32.500 | 50÷80 | 1020x1080x1190 | 8 | 28 |
| APL 400 | 700 | 35.750 | 50÷80 | 1220x1170x1310 | 10 | 35 |
| APL 500 | 700 | 35.750 | 50÷80 | 1220x1240x1310 | 10 | 40 |
| APL 600 | 700 | 35.750 | 50÷80 | 1220x1350x1310 | 10 | 45 |
| APL 800 | 700 | 35.750 | 50÷80 | 1500x1400x1360 | 10 | 50 |
| APL 1000 | 700 | 35.750 | 50÷80 | 1500x1570x1360 | 10 | 55 |
| APD 400 | 700 | 54.000 | 50÷80 | 1220x1000x1470 | 14 | 50 |
| APD 500 | 700 | 54.000 | 50÷80 | 1220x1060x1470 | 14 | 55 |
| APD 600 | 700 | 54.000 | 50÷80 | 1220x1080x1470 | 14 | 60 |
| APD 800 | 700 | 54.000 | 50÷80 | 1500x1170x1510 | 14 | 65 |
| APD 1000 | 700 | 54.000 | 50÷80 | 1500x1240x1510 | 14 | 70 |

